

241 ○

II
987/1

111-3521

13.05

7

4.80

1025/1

1025/4

6

5.74

5

8.20

111-3582

893/63

19

763/1

893/61

⊕

763/2

⊕

763/4

II

988

893/62

893/64

⊕

763/3

893/65

⊕

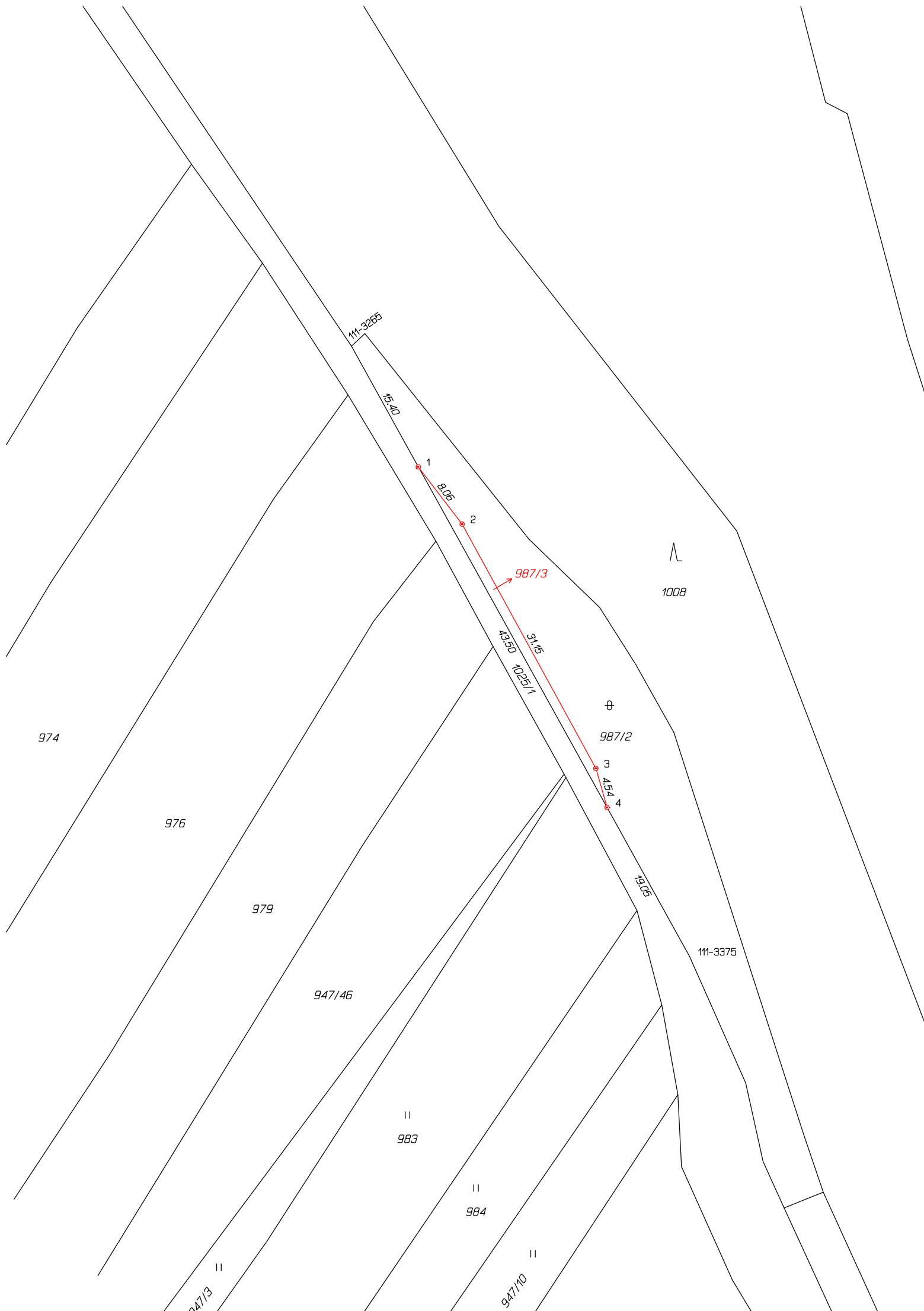
761/1

761/2

⊕

760

992



974

976

979

947/46

||
983

||
984

||
947/10

||
947/13

111-3285

15/10

1

8.05

2

987/3

4350

1025/1

31/5

⊕

987/2

3

454

4

13.05



1008

111-3375